

INTRODUCING BLYOTT

# Keep Track of Your Ambulance Equipment





BLYOTT | REMOTE INSIGHTS

# Our purpose and passion ...

... is to boost an organization's efficiency and help achieve its sustainability objectives using cutting-edge localization and monitoring tools, backed by powerful data analytics and AI.

**Big Savings. Happy Staff.** (and a greener planet)



# About Blyott

## **Big Savings. Happy Staff.** (and a greener planet)

Through our innovative localization and monitoring solutions, and enhanced by big data analytics and AI, we elevate operational excellence, nurture staff well-being, and champion a sustainable future.

## **Global Presence**

Since our inception in 2019, we've established a robust international client network through local partnerships, bolstered by our direct sales teams in Belgium and the Netherlands.

## **Local Offices**

Our headquarters and marketing & sales division are based in Bruges (BE), while our development and support teams operate out of Split (HR).





# Four Ambulance Equipment Challenges



1

## Searching for equipment

Lose valuable time looking for the right equipment (e.g. at hospitals, patient houses)



2

## Live inventory

No clear view on what equipment is where, inventory discrepancies



3

## Loss and theft

With no equipment data at hand, it's impossible to know what's missing—even stolen.



4

## Process flow optimization

Missing the opportunity to automate inventory of rented equipment, ERP integration

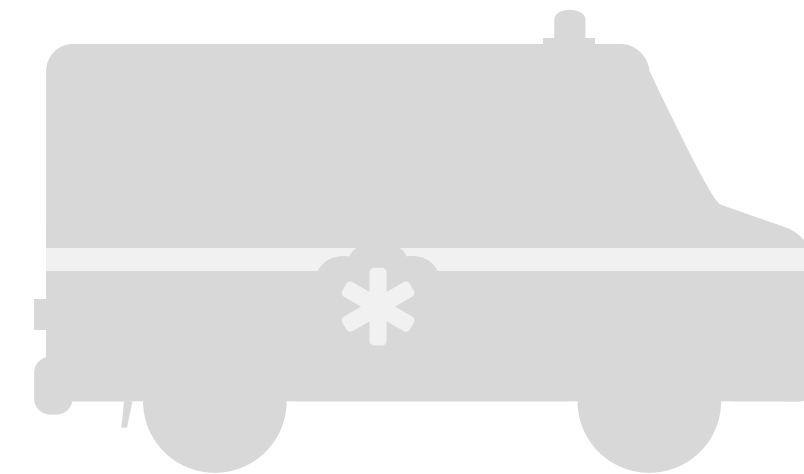


# Ambulances Hold Valuable Equipment

## Ambulances are packed with life-saving equipment

On average any ambulance holds up to *25 different types* of equipment used to treat patients at home or on the road.

- ✓ Spinal board, infusion and suction pumps
- ✓ ECG monitor and a defibrillator
- ✓ Cot, patient shifting rolls, and ambulance chair
- ✓ ...and so much more!

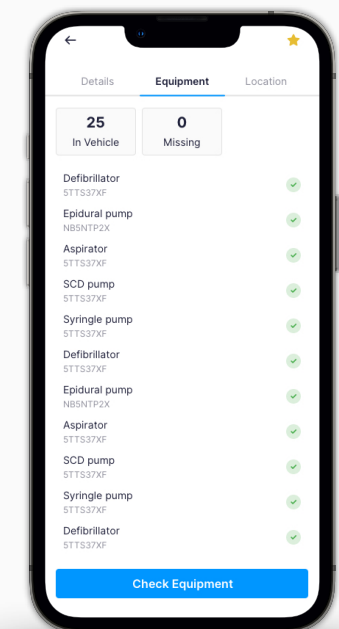
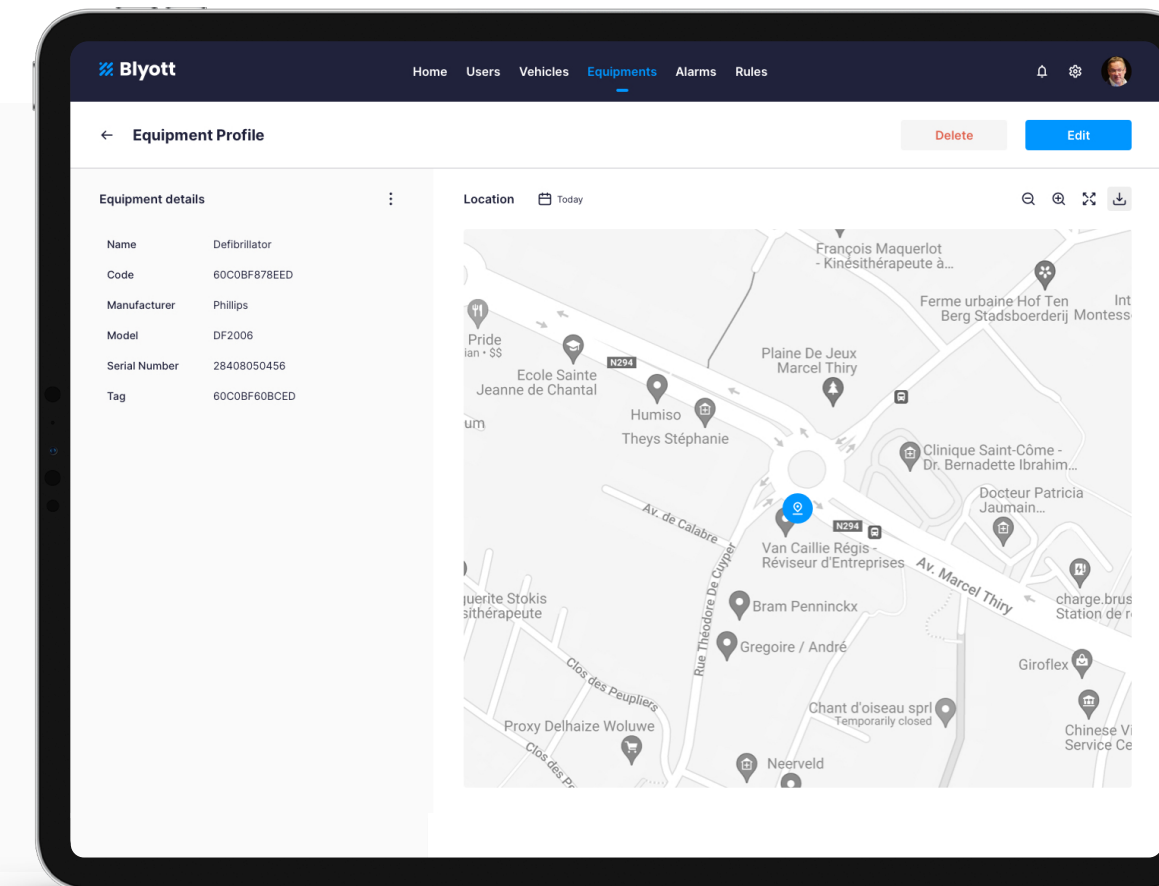


**170.000 EUR**

Is how much an ambulance holds in medical equipment



# Four Main Components



## 1 Blyott Sensors

Fixed on assets. Location and temperature tracking, up to 7-years battery life.

## 2 Mobile Locators with 4G

Receive Blyott sensor information. Wi-Fi AP's, fixed & mobile (4G) locators.

## 3 Remote Insights Platform

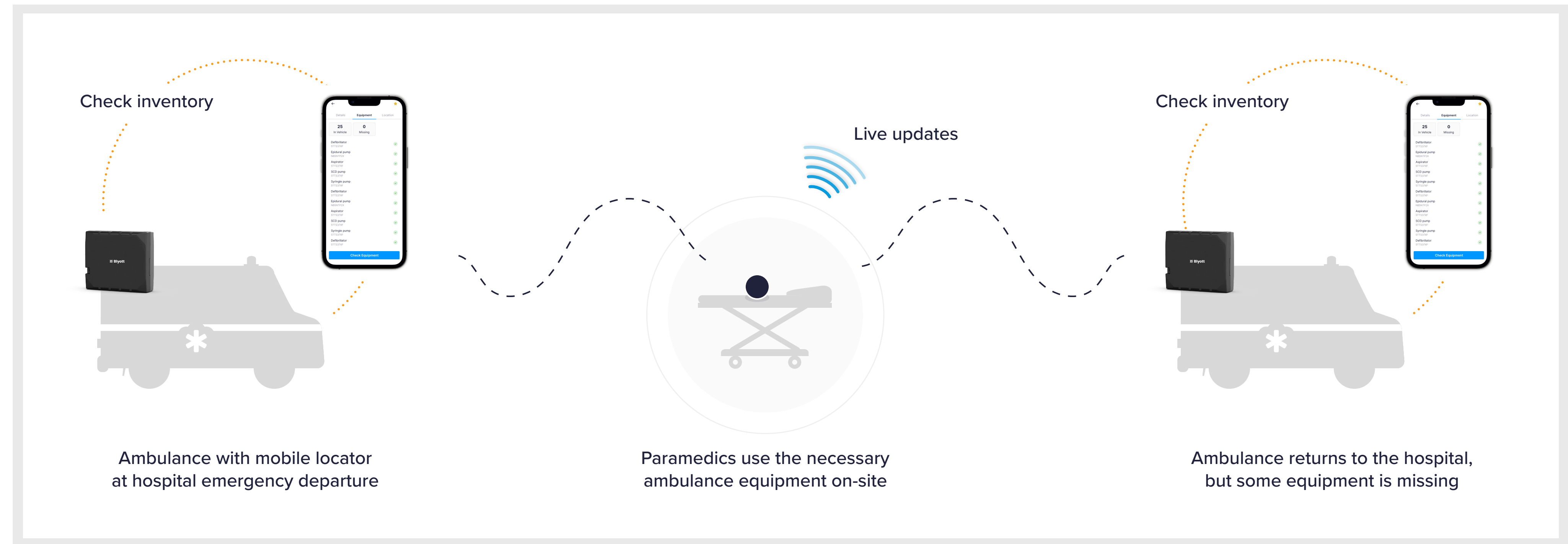
Serverless & scalable architecture. Big "Location" Data analytics.

## 4 Customer Applications

Blyott web and mobile app. Support for 3rd party apps using Rest API's and webhooks.

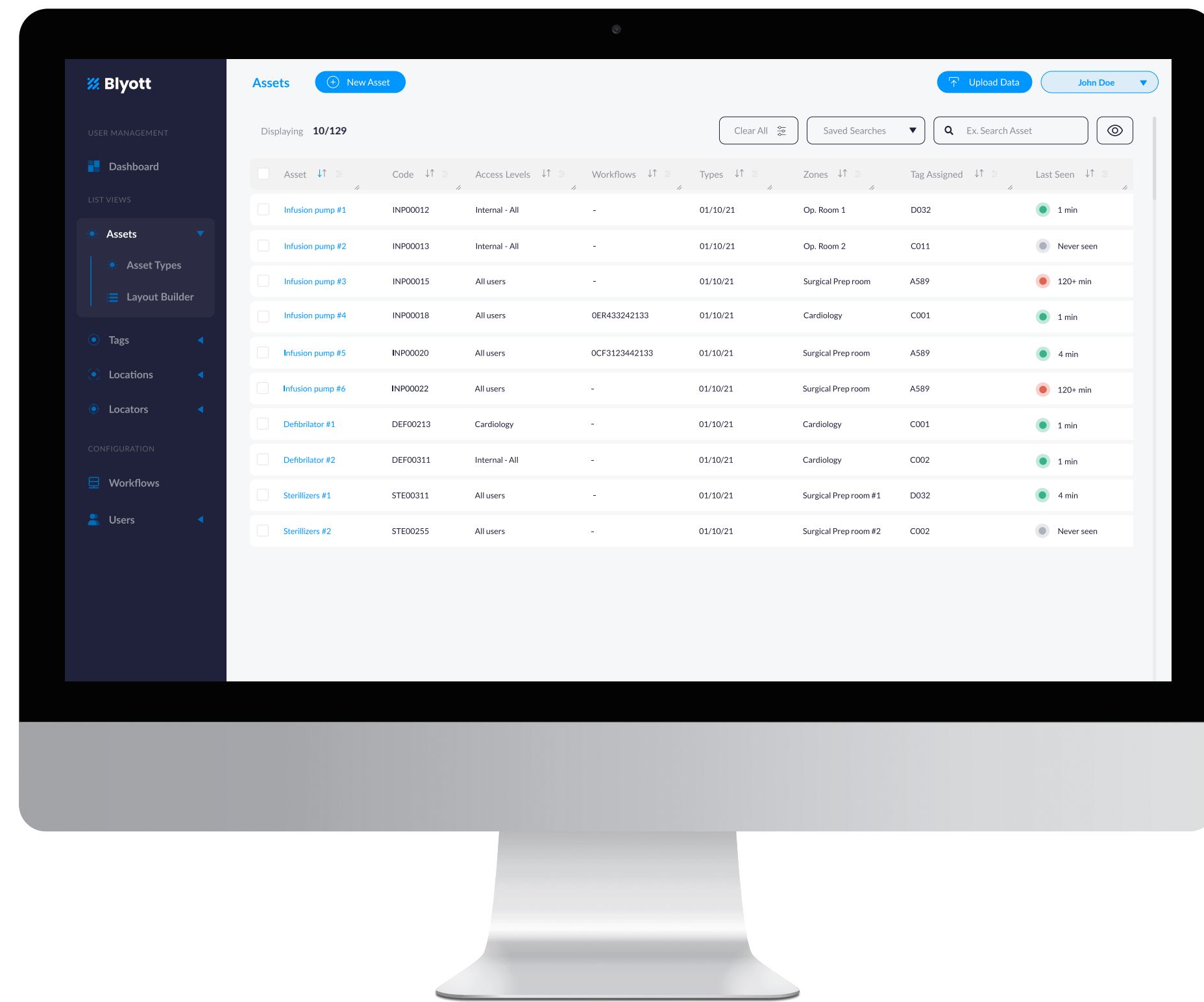


# How to Track your Ambulance Equipment





# Remote Insights Platform



✓ Outdoor and indoor real-time localization of equipment, live inventory, and theft prevention.

✓ Insights with Big “Location” Data: asset utilization, engine and exhaust system information.

✓ REST APIs and webhooks allow for easy integration of features into your existing applications.



# Insights Module

## The real power of asset tracking is Big Location Data

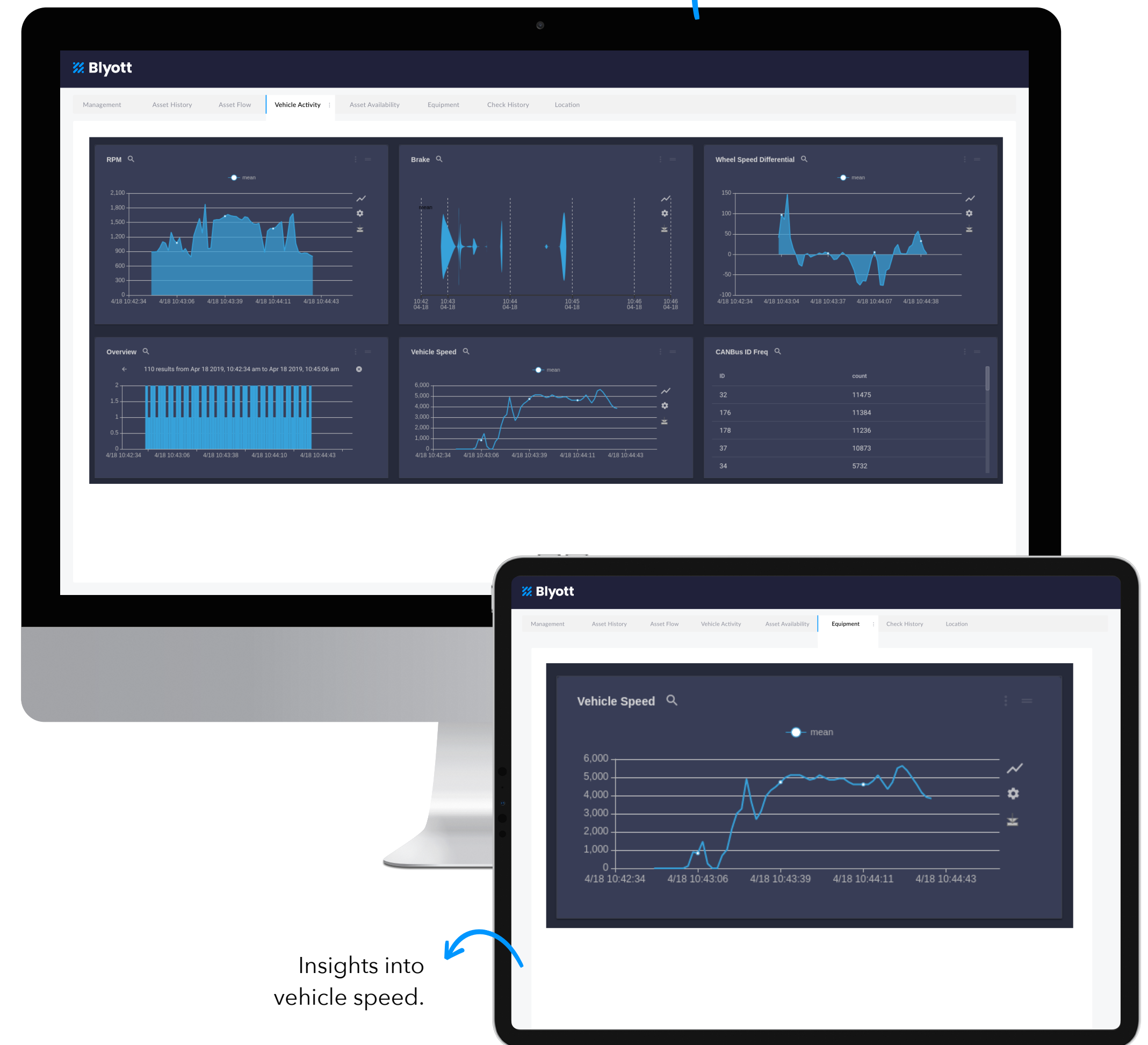
The Blyott Remote Insights Platform offers you real-time location tracking and also asset utilization insights:

- ✓ Stay up to date on your vehicle fleet.
- ✓ Observe how drivers are treating the vehicles.
- ✓ Use behavioral and predictive analytics to keep ahead of maintenance schedules.

### Partnership with SAS

SAS provides a software suite for predictive analytics and data management, turning data into intelligence.

Monitor vehicle  
CANBus activity.



Insights into  
vehicle speed.



# Four Major Advantages



1

## Fast to implement

Plug and play: connect mobile locator to vehicle (USB) to receive sensor info.



2

## Open platform

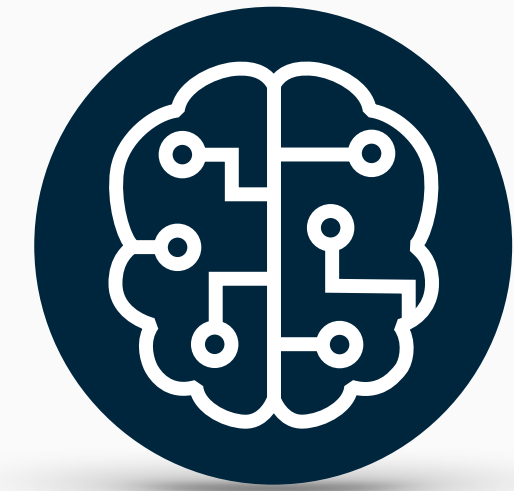
Get support for 3rd party apps using REST APIs and webhooks, regardless of OS.



3

## Attractive pricing model

Enjoy a “pay-as-you-grow” business model with very limited upfront costs.



4

## Insights Module

ML and Big Location Data give you extremely valuable insights into asset utilization.



# Partners

## Commercial



...and more.

## Technology



...and more.

## Software



...and more.



# Big Savings Happy Staff

THANK YOU FOR YOUR ATTENTION  
**[www.blyott.com](http://www.blyott.com) - [info@blyott.com](mailto:info@blyott.com)**