



Fixed Demo Kit

INSTALLATION MANUAL - Q4/2024

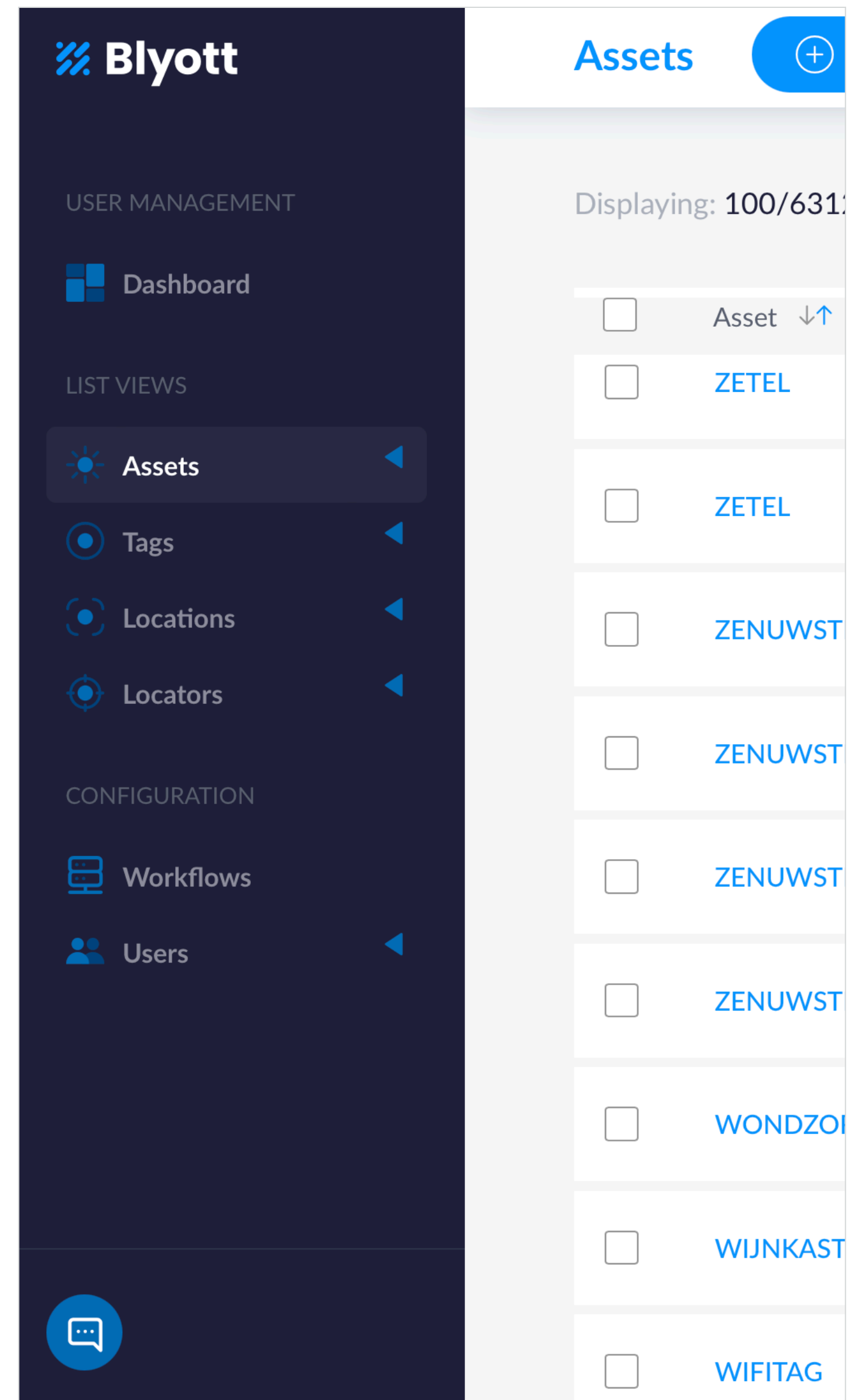
Fixed Demo Kit components

The Fixed Demo Kit contains the following components:

- (1) Bluetooth Fixed Locator (BT-L1)
- (2) Bluetooth Tag (BT-T1 or alternatives)
- (3) Blyott Cloud - demo licenses (*) (**)

(*) Your access credentials have been sent to your E-mail address. Didn't you receive these? Contact us @ support@blyott.com. Use your credentials to log-in into the Blyott Portal; link [here](#).

(**) The demo kit comes with fully functioning licenses including access to the Blyott REST API's and WebHooks. These demo licenses are valid for 1 year and can be renewed after this period.



Blyott concepts

1/ Locations

E.g. different “rooms” in a hospital. Whereby every room has its own unique code e.g. “R1” and name e.g. “Room 1”.

2/ Locators

The BT-L1 comes with its own unique MAC address (= QR-code). The BT-L1 is linked to a “room” where it is physically installed.

3/ Assets

An asset in a hospital. E.g. a hospital bed. Every asset has its own unique code used by the hospital (e.g. BED001).

4/ Tags

The BT-T1 has its own unique MAC address (= QR-code). This tag is physically fixed on, and linked to, an asset.

1/ Location R1 = Room 1



2/ Locator A linked to R1



4/ Tag X linked to BED001

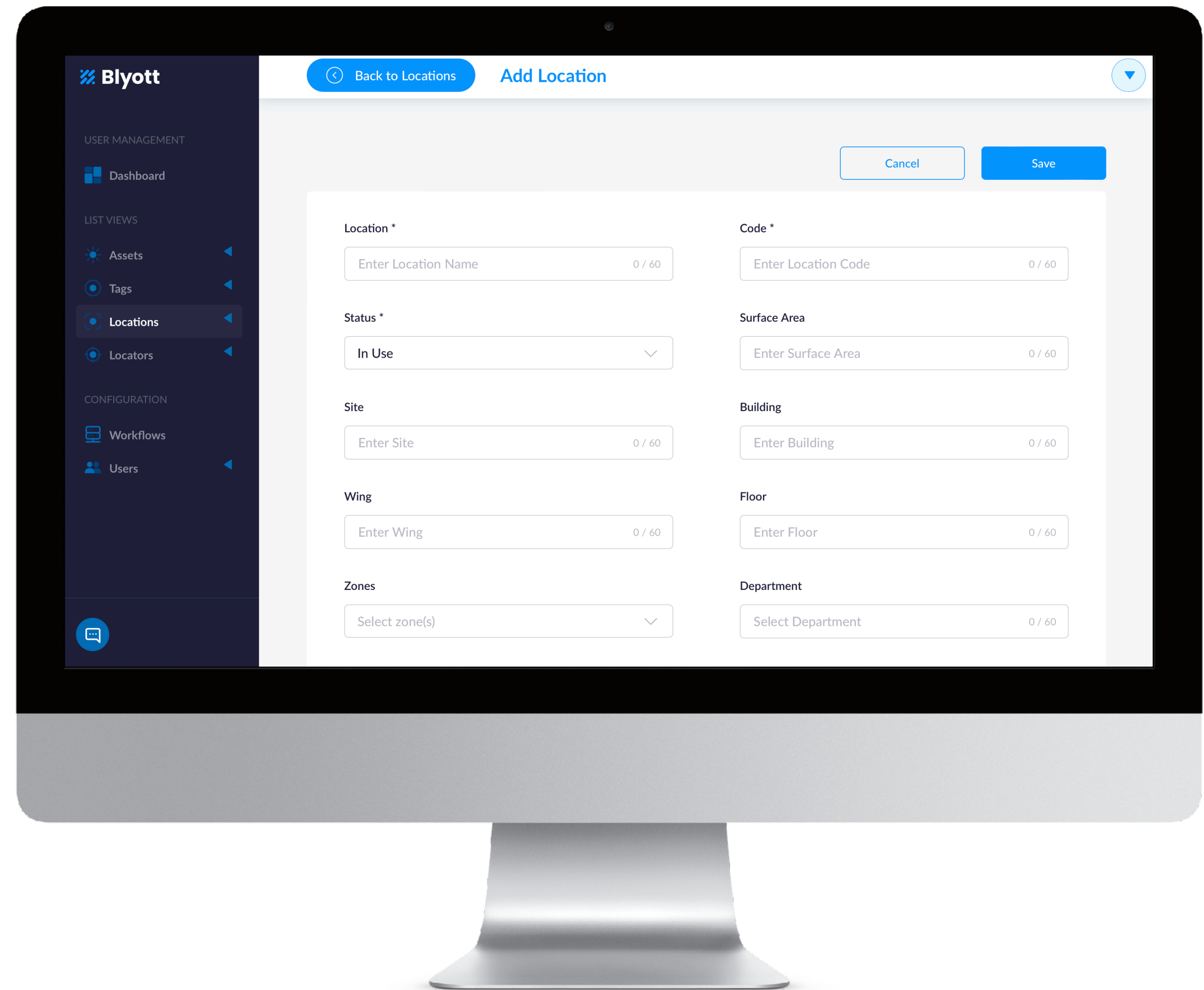


3/ Asset BED001



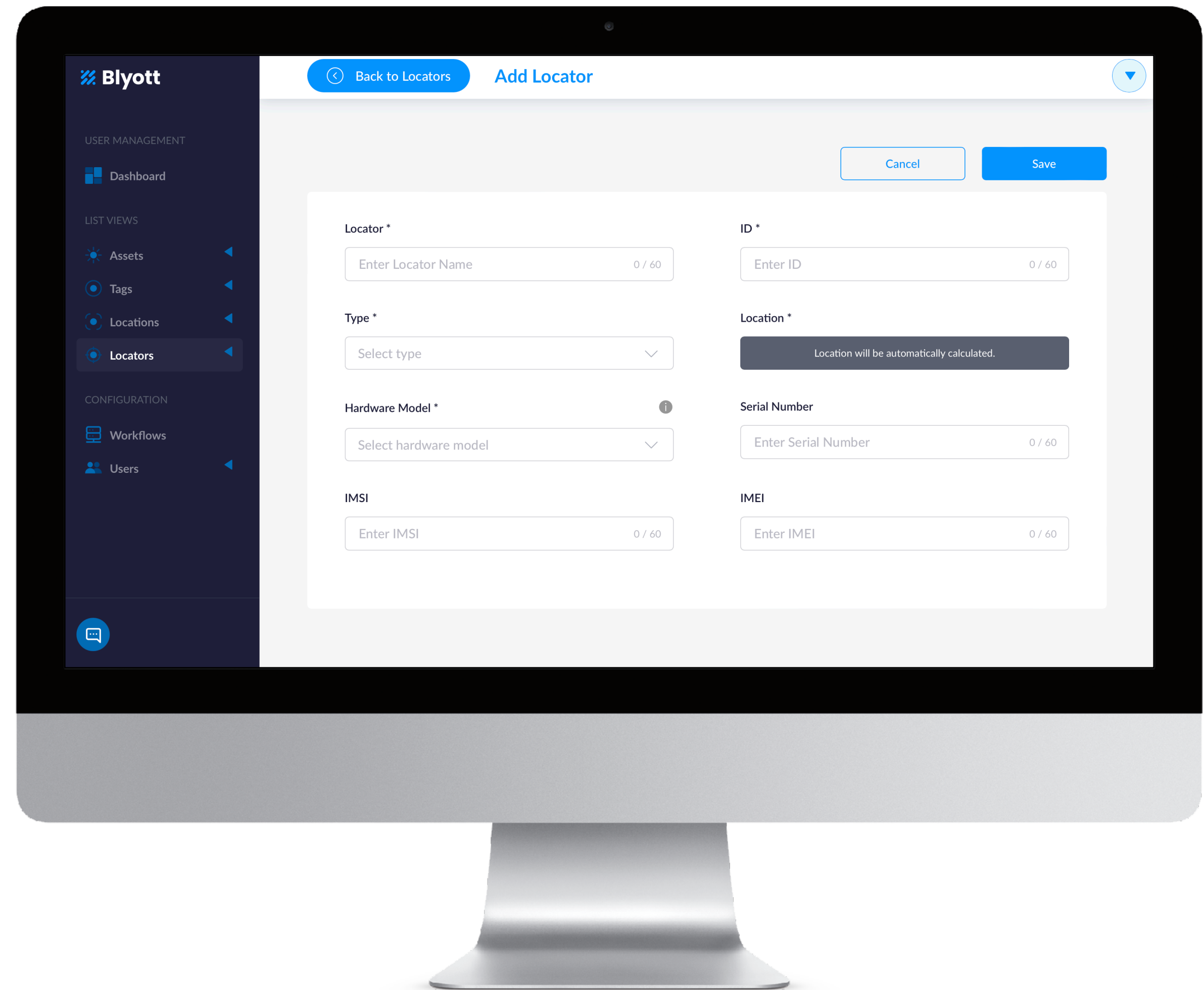
Step 1: Create Locations

- Go to tab “Locations”
- Click on the “+” sign to add a new location
 - ▶ Location = name of the room; e.g. Patient Room 1
 - ▶ Code = internal code of the room; e.g. R1
 - ▶ Status = choose “In Use” as standard value (e.g. “patient room = in use”, whereby “storage room = available”)
- Click on Save
 - ▶ Repeat the process; for the demo enter at least as many locations as you have BT-L1’s.



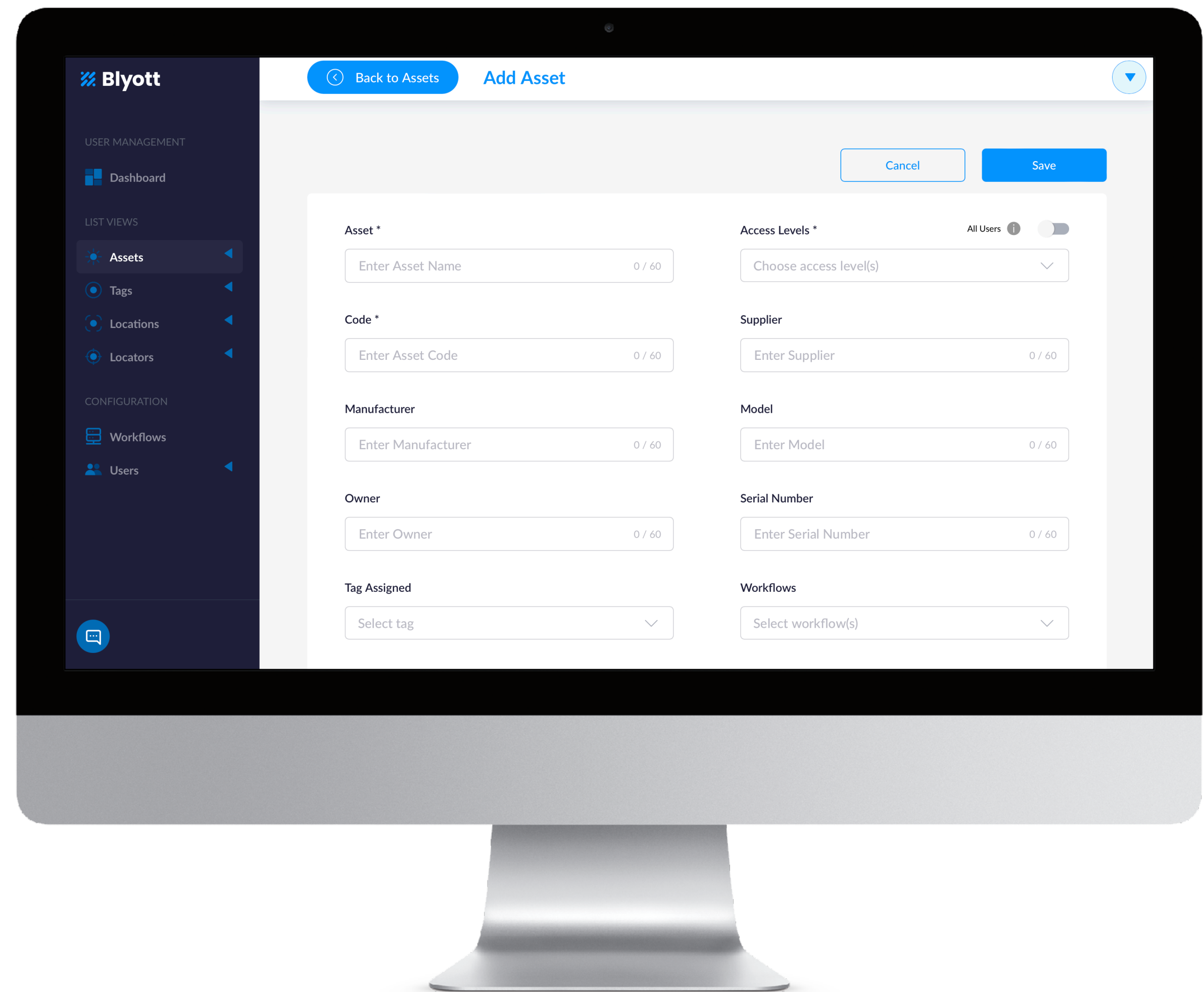
Step 2: Create Locators

- Go to tab “Locators”
- Click on the “+” sign to add a new locator
 - ▶ Locator = name you give to the locator; e.g. Locator 1
 - ▶ ID = MAC address as indicated on the bottom of the BT-L1. Enter the MAC address **in capital letters** and **without** the semicolons (:). Contact us if you need the Wi-Fi and/or Ethernet MAC address(es) of this device (e.g. for firewall rules).
 - ▶ Type = choose “Fixed” as standard value
 - ▶ Location = select one of the Locations you defined
 - ▶ Hardware Model = select BT-L1
 - ▶ Serial Number, IMSI, IMEI = leave empty
- Click on Save



Step 3: Create Assets

- Go to tab “Assets”
- Click on the “+” sign to add a new asset
 - Asset = name of the asset; e.g. Bed 001
 - Access Levels = select “all”
 - Code = enter e.g. the unique barcode of the bed
 - Tag Assigned = leave empty
- Click on Save
 - Repeat the process; for using the demo enter at least as many assets as you have BT-T1’s.
 - Assets can also be added via the “mobile app”; cf. “Step 5”.



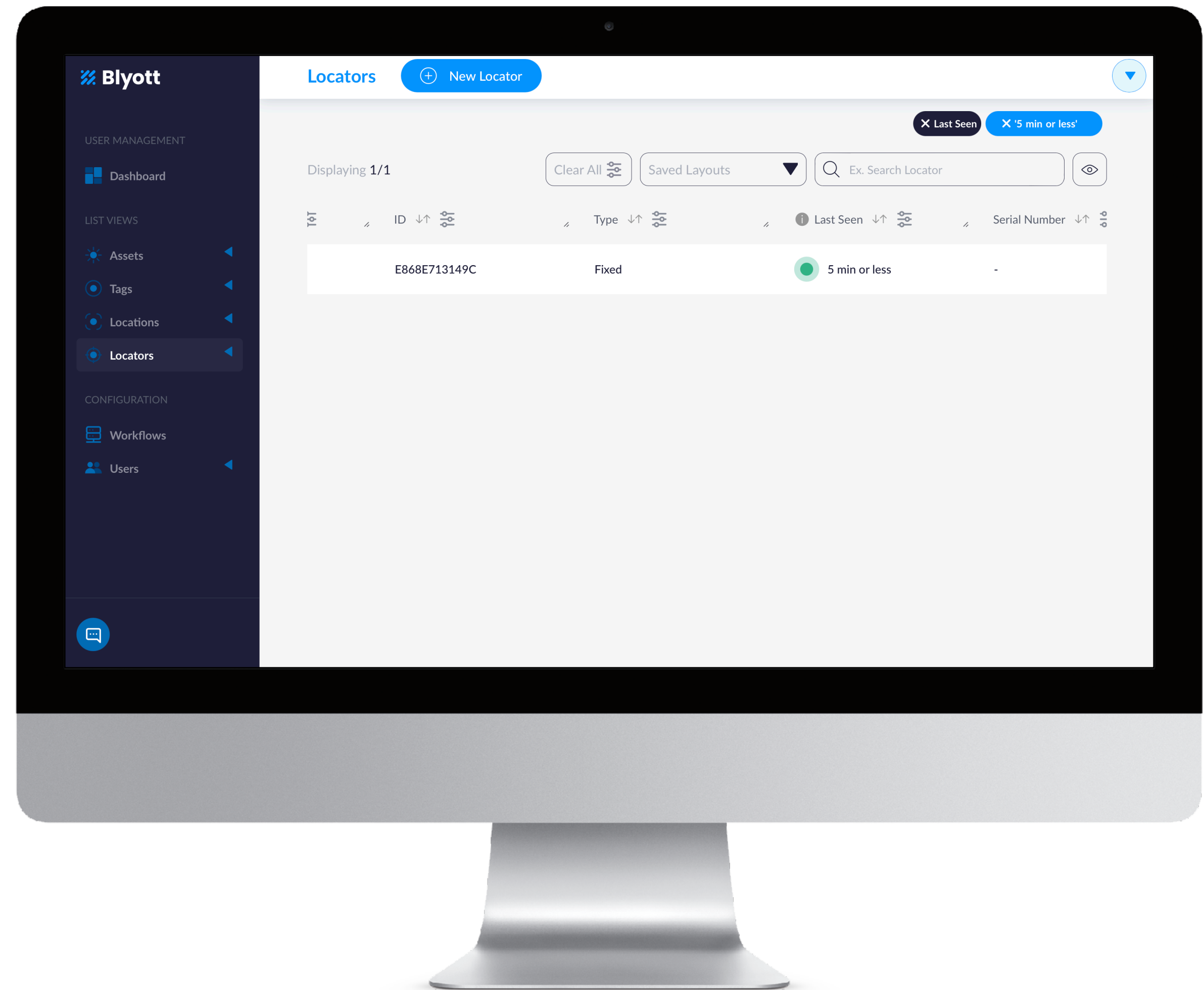
Step 4: Activate Locators & Tags

• Activate the BT-L1 locator

- ▶ Power on the device via PoE or USB; USB power adaptor is **not** included.
- ▶ Connect the device to the internet via either Ethernet (recommended) or Wi-Fi (only 2.4Ghz). Contact us if you need to know the Ethernet and/or Wi-Fi MAC address(es) of the device (e.g. for firewall rules).
- ▶ In case of connection via Wi-Fi: create a new Wi-Fi network on your router with the following settings: SSID = “Blyott” and WPA2 password = “BlyoTT:2200!”
- ▶ Make sure ports TCP/UDP 123 (e.g. pool.ntp.org), 443 (https://api.blyott.com, https://portal.blyott.com, https://firmware.blyott.com, OR https://*.blyott.com) and 8883 (MQTT to tcp://aroncdz10y0su-ats.iot.eu-west-1.amazonaws.com:8883) are open on your firewall or router.
- ▶ You can check the connection status per device via the Blyott portal or via the LED's on the device: Left “Green” = power, Middle “Green” = connected to Blyott, Right “White” = sending data via Ethernet to Blyott (blinking = via Wi-Fi).

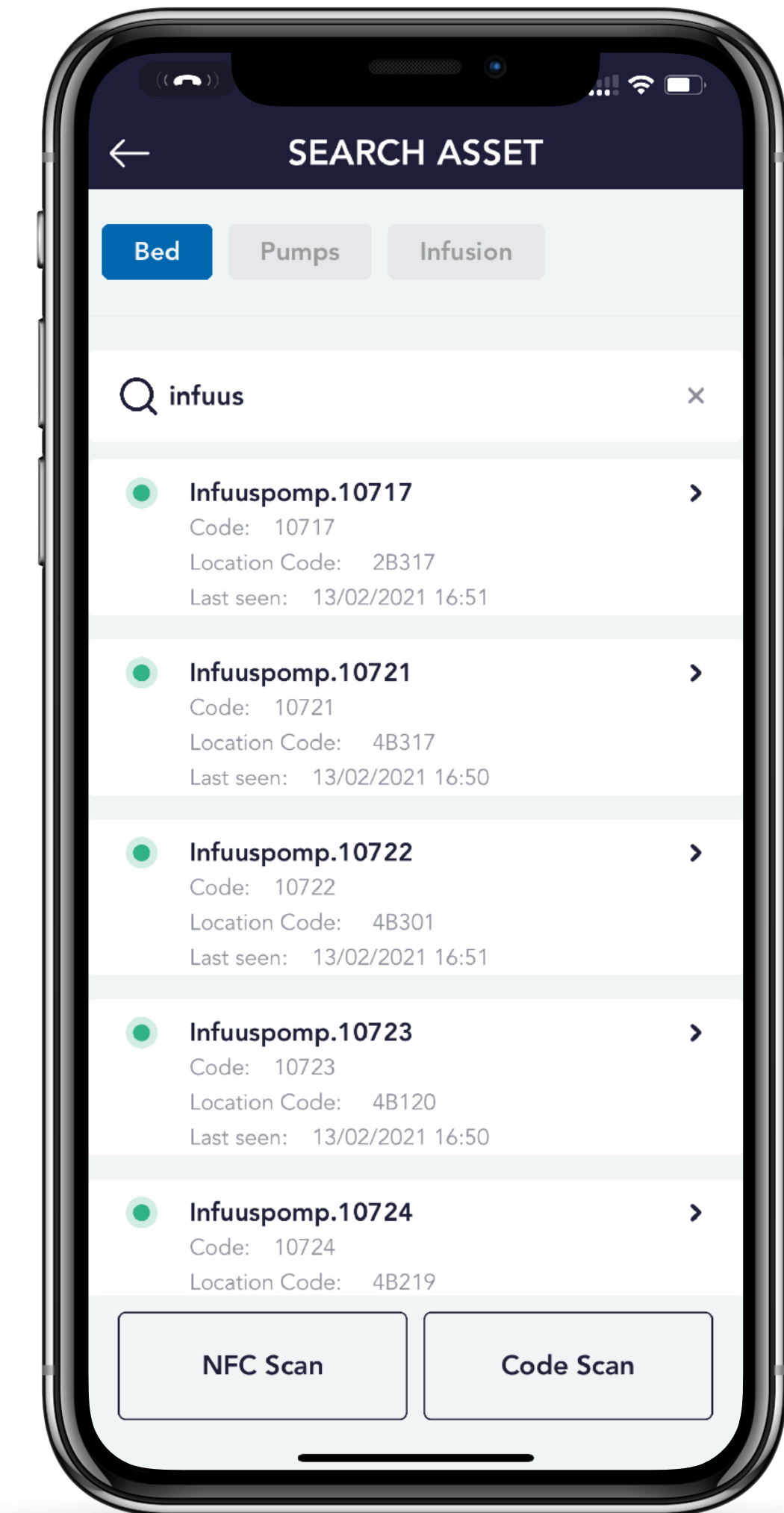
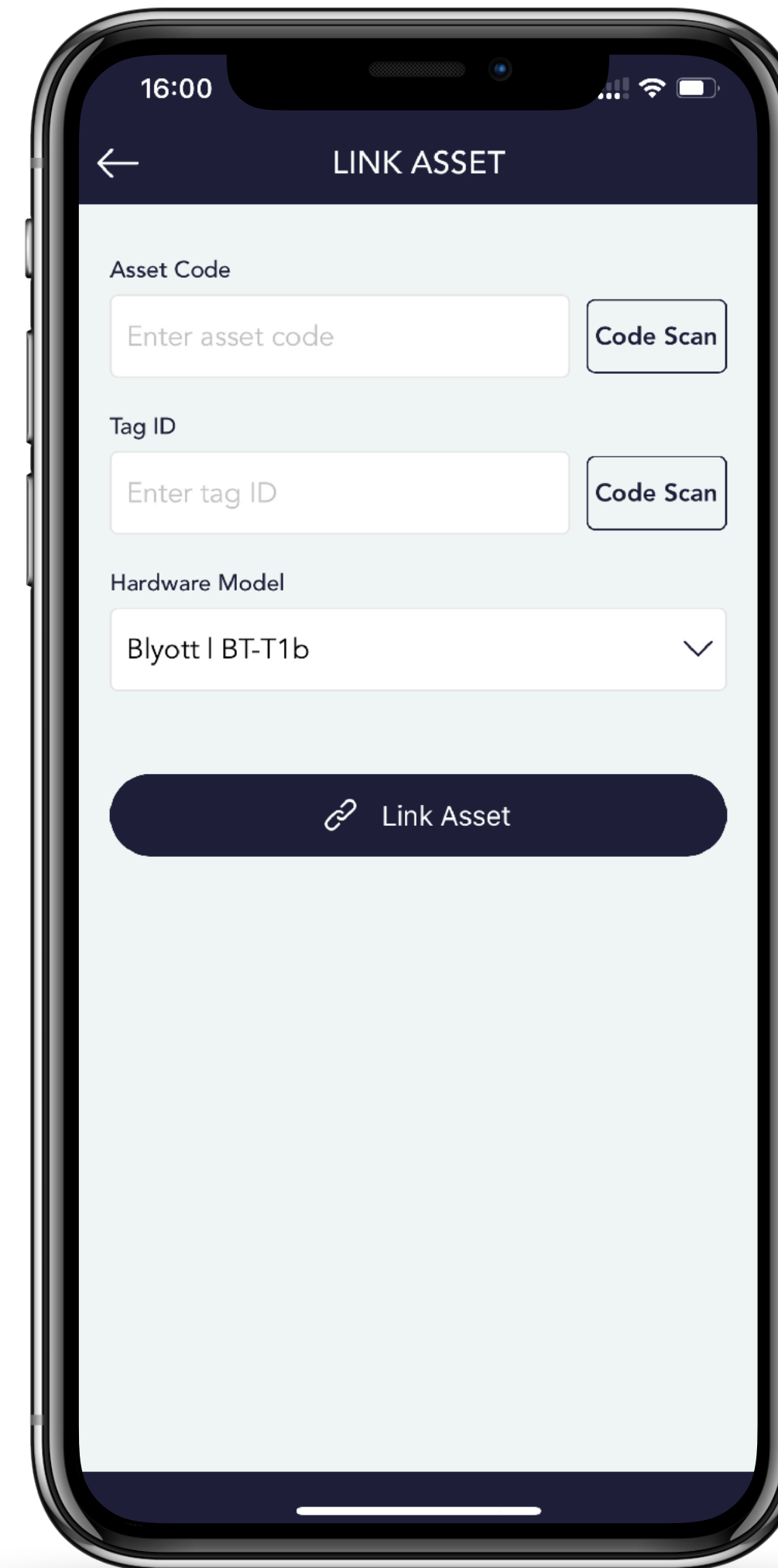
• Activate the BT-T1 tag

- ▶ **Press and click the tag during 3s twice.** Both the red and green LEDs will start flashing (5x and 3x or 3x and 3x). The tag is now activated.



Step 5: Mobile App

- Download our Mobile App
 - ▶ Available in both the Apple App Store and the Google Play Store under the “Blyott” brand-name.
 - ▶ To log-in: use your existing Blyott credentials.
- Link Asset to Tag
 - ▶ Take one of the BT-T1 tags and fix the tag on an asset, e.g. Bed 001.
 - ▶ Click “Link Asset” in the mobile app. Scan the QR-code of the tag (= Tag ID). Scan the Barcode of the asset (or enter e.g. bed001 manually) (= Asset Code). Click the “Link Asset” button.
 - ▶ The tag is now linked to the asset. You can now search for your assets by clicking the “Search Asset” button.



Frequently Asked Questions (1/2)

- Bulk Down- and Upload?

- ▶ Yes. Via the Blyott portal you can down- and upload many items at the same time (e.g. assets, locations, locators, ...). We also have [Excel templates](#) to facilitate the onboarding process.

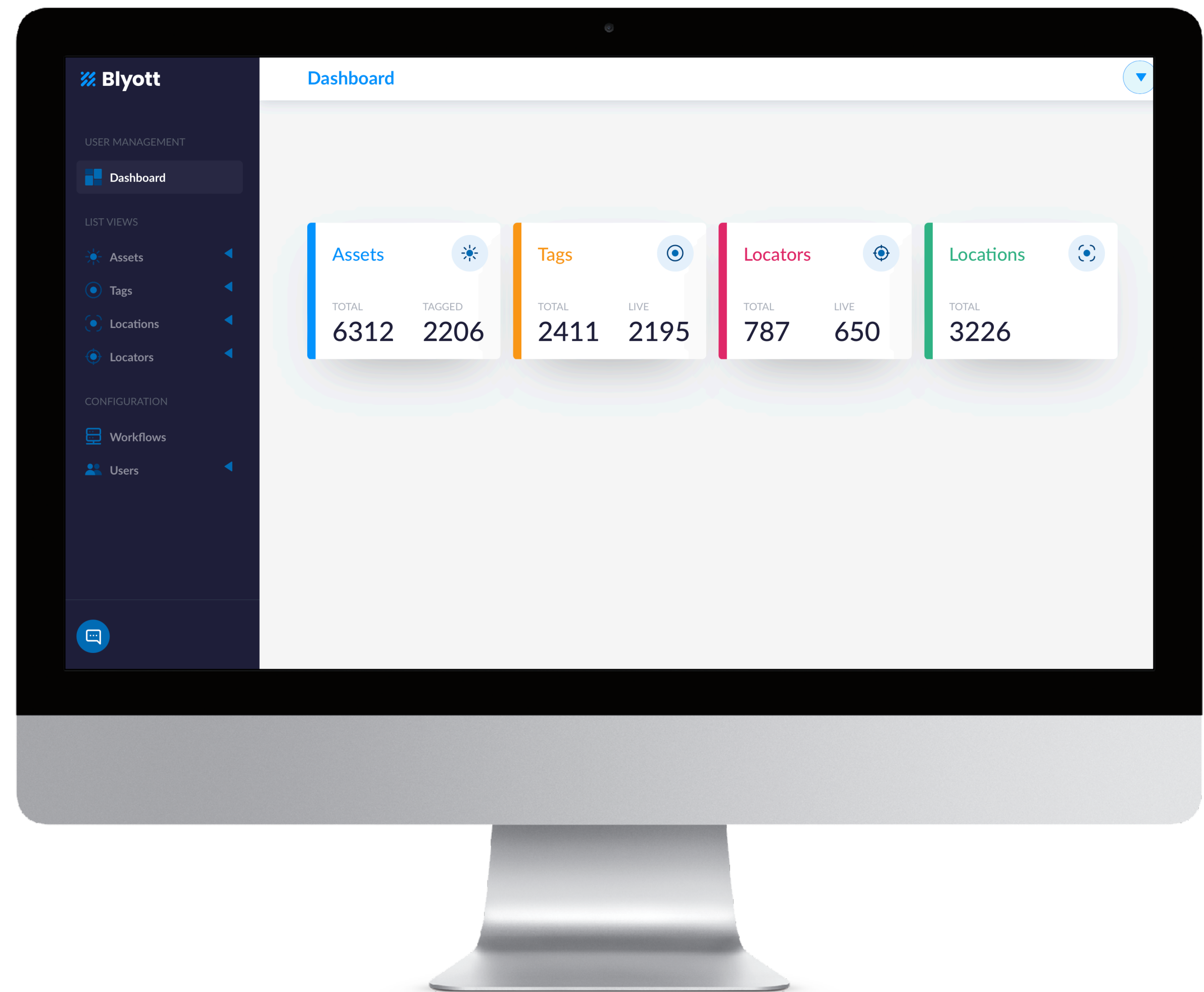
- 3rd Party App Integration?

- ▶ Yes. Via our REST API's and WebHooks it is possible to integrate many features in existing applications. Check out our API's [here](#) or support site [here](#).

- Sensors & 3rd Party Tags?

- ▶ The BT-T1 tag comes with a built-in T° sensor, movement detector and press button.
- ▶ It is possible to integrate 3rd party tags with our cloud platform.

Contact us for more information @ support@blyott.com



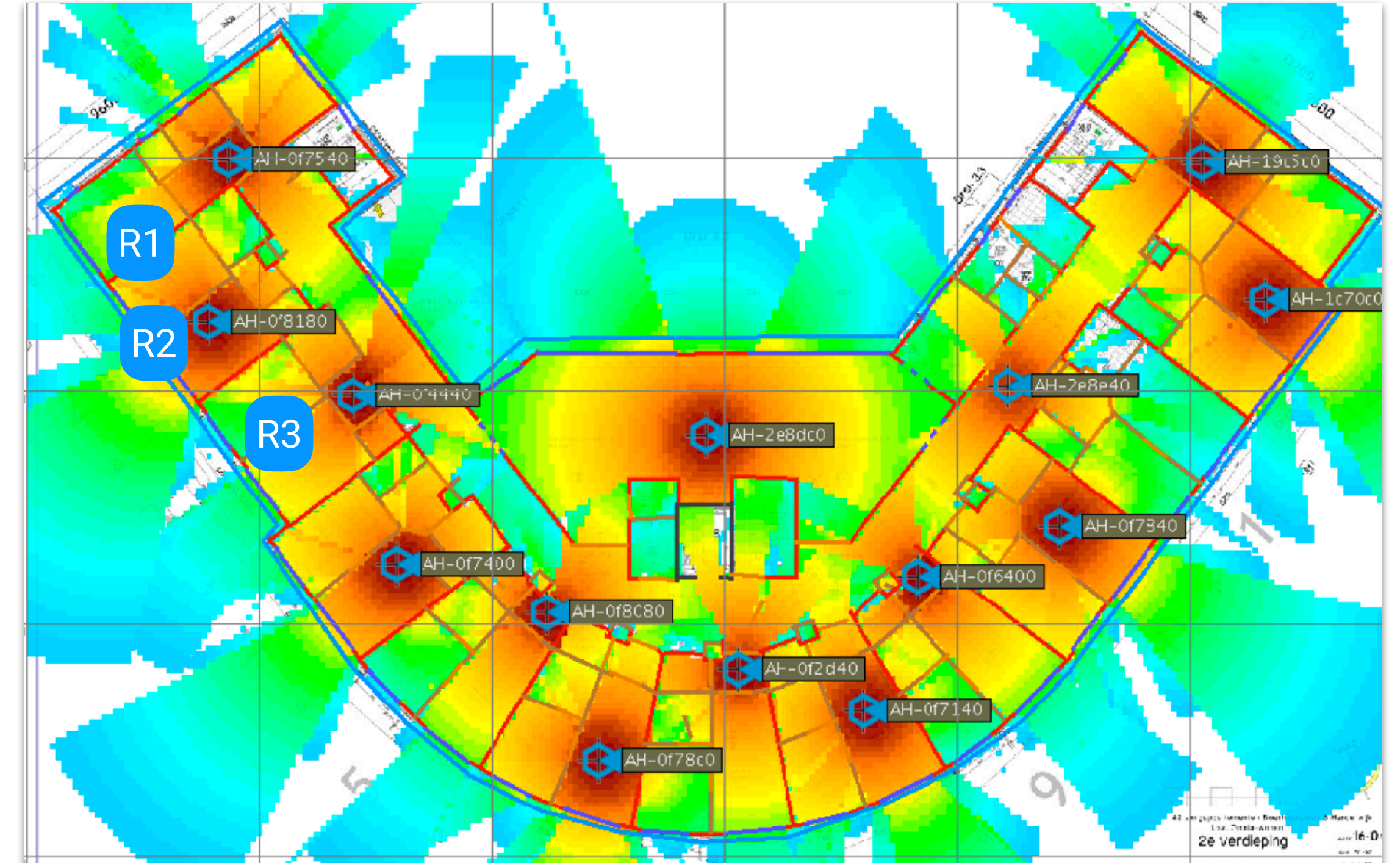
Frequently Asked Questions (2/2)

• Coverage of the BT-L1 locator?

- ▶ On average, the BT-L1 locator can “see” Blyott tags up to a distance of +/-10m. This implies that 1 locator can cover an area of +/- 300m².
- ▶ The higher the number of locators, the higher the location accuracy. We advise at least 3 locators per floor and 1 locator per 100m²-150m²; this gives a location accuracy of +/- 6m.

• Increase Location Accuracy?

- ▶ When “Machine Learning” (ML) is not used, the returned location is based upon the closest location where a locator is installed in and linked to.
- ▶ When “fixe” BT-T1 reference tags are installed in more locations (e.g. more rooms), the location is calculated via our ML localisation algorithm. This results in a higher location accuracy of +/- 3m.
- ▶ Contact us if you want to activate the ML option for your demo-environment. **A minimum of 3 BT-L1’s and sufficient “fixed tags” are required to activate this option.**



Example: hospital floor with 35 “locations” and 14 “locators”.

- (1) Without ML activated, only 14 “locations” are known. If an asset is e.g. in Room 1, the Blyott platform will indicate that the asset is in Room 2 if locator 8180 receives the strongest signal.
- (2) With ML activated and a reference tag in each room, all 35 “locations” are known. If an asset is in Room 1, the Blyott platform will predict -with a certain “confidence level” (e.g. “95% sure”)- Room 1 as the correct room even if locator 8180 (R2) in Room 2 receives the strongest signal.
- (3) With ML activated, and dependent on the number of locators and reference tags installed, we can now reach “room level accuracy”. This implies that in most cases, the correct room will be predicted.

Big Savings Happy Staff

THANK YOU FOR YOUR ATTENTION
www.blyott.com - info@blyott.com