

Mobile Demo Kit

INSTALLATION MANUAL - Q4/2024

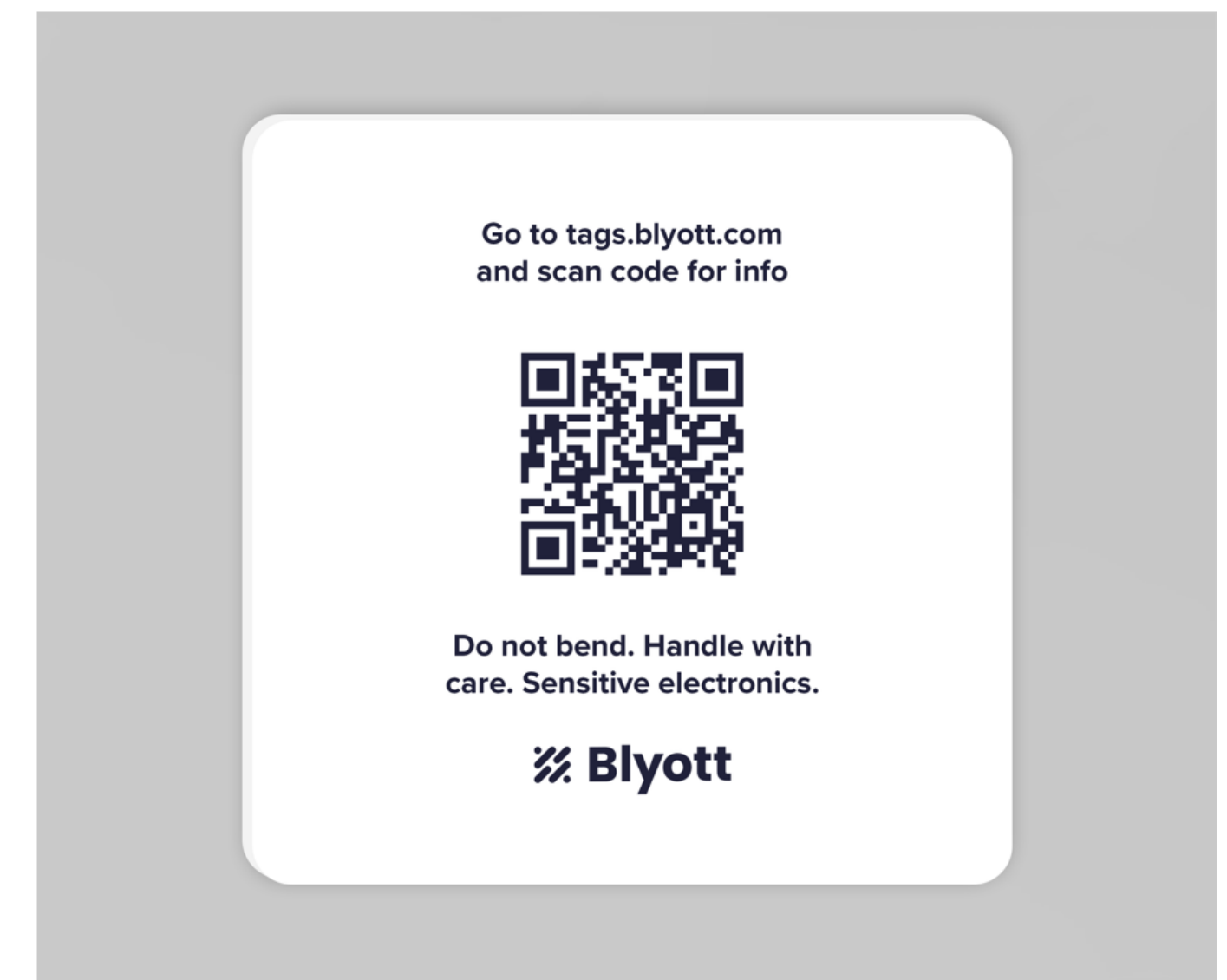
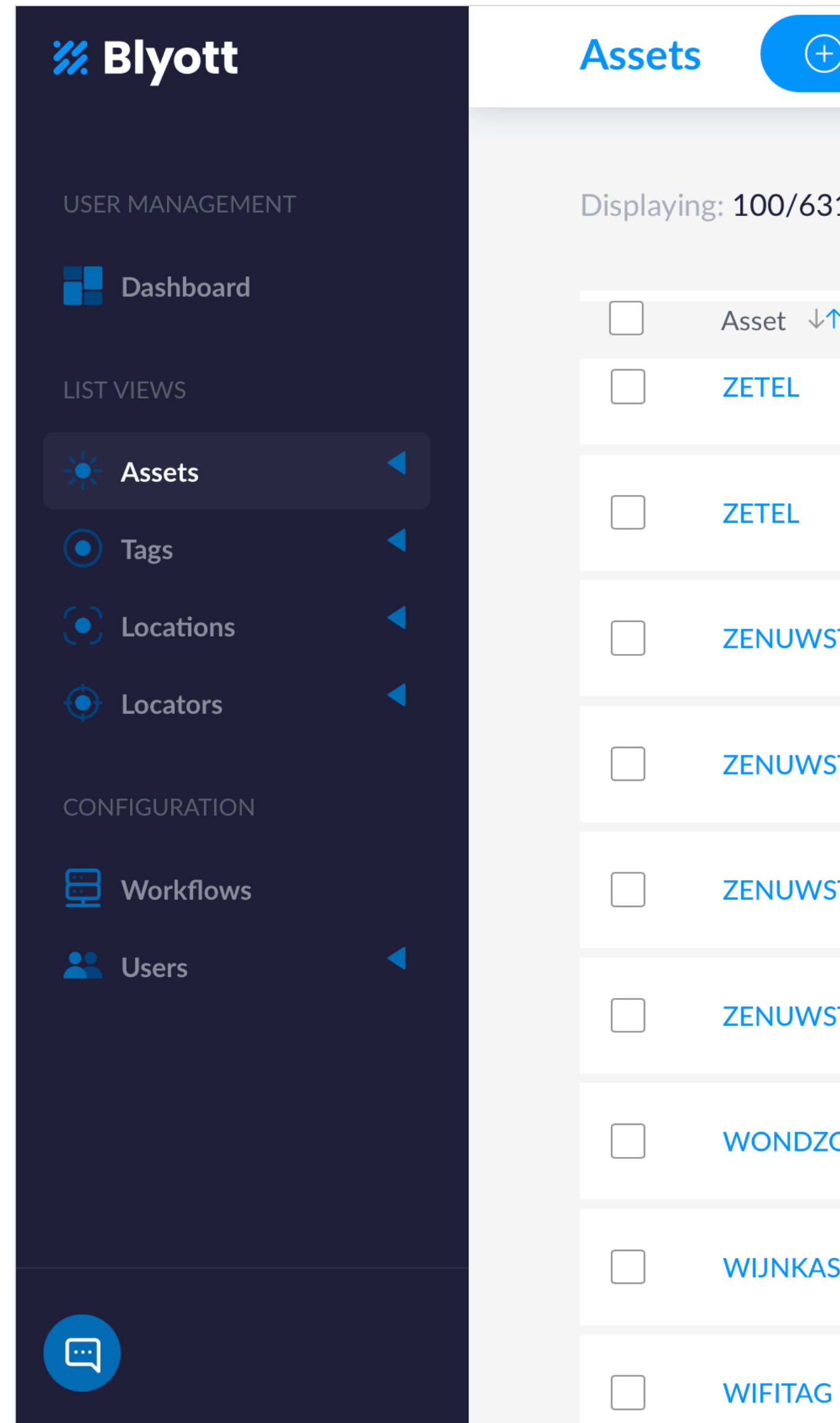
Mobile Demo Kit components

The Mobile Demo Kit contains the following components:

- (1) Bluetooth Mobile Locator (BT-M1)
- (2) Bluetooth Tags (BT-BS or alternatives)
- (3) Blyott Cloud - demo licenses (*) (**)

(*) Your access credentials have been sent to your E-mail address. Didn't you receive these? Contact us @ support@blyott.com. Use your credentials to log-in into the Blyott Portal; link [here](#).

(**) The demo kit comes with fully functioning licenses including access to the Blyott REST API's and WebHooks. These demo licenses are valid for 1 year and can be renewed after this period.



Blyott concepts

1/ Locations

E.g. different “rooms” in a hospital. Whereby every room has its own unique code e.g. “R1” and name e.g. “Room 1”.

2/ Mobile Locators

The BT-M1 comes with its own unique IMEI number. The BT-M1 can be used in both “fixed” or “mobile” use cases (see further - FAQ).

3/ Assets

An asset in a hospital. E.g. a hospital bed. Every asset has its own unique code used by the hospital (e.g. BED001).

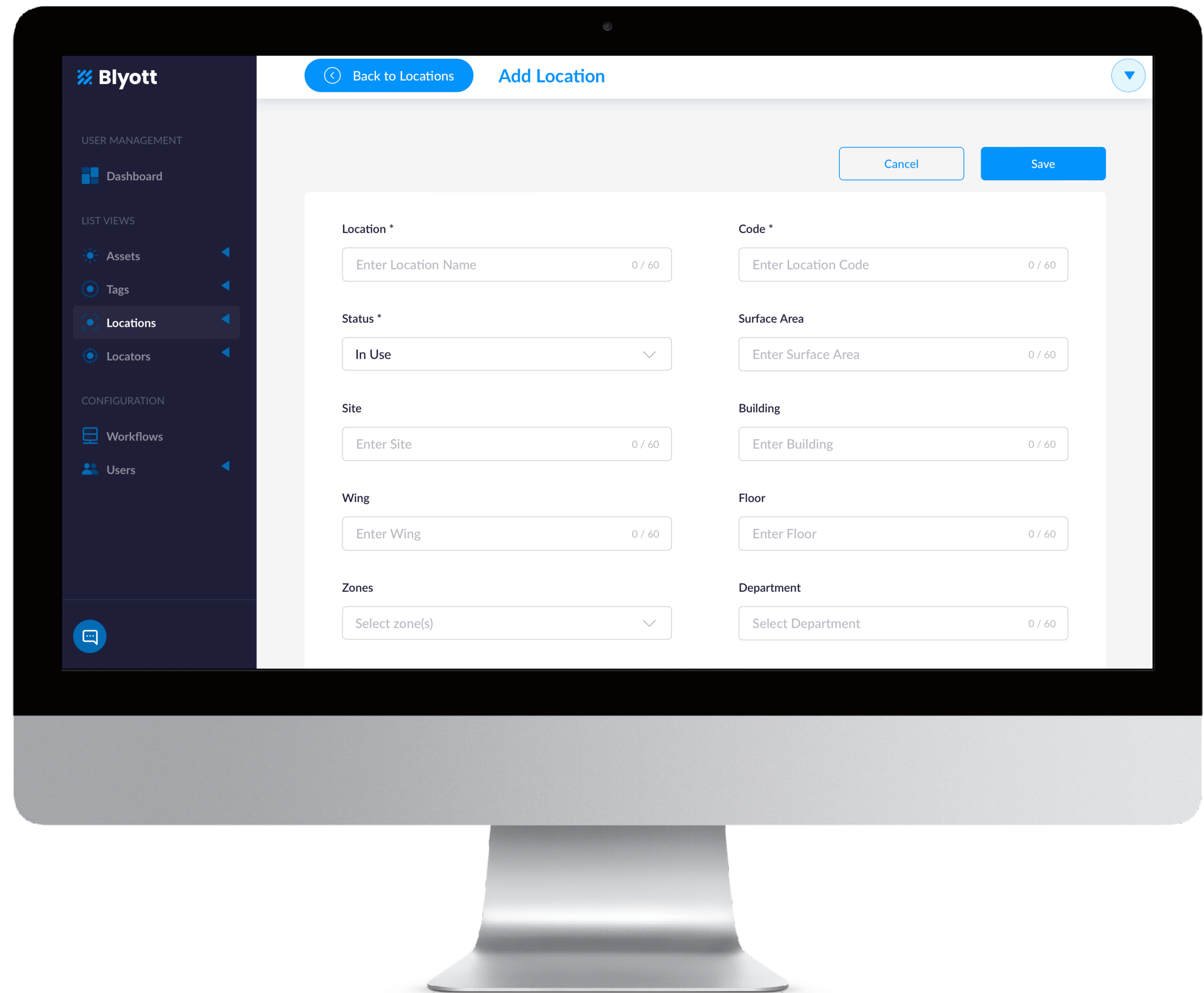
4/ BLE Tags

The BT-BS has its own unique MAC address (= QR-code). This tag is physically fixed on, and linked to, an asset.



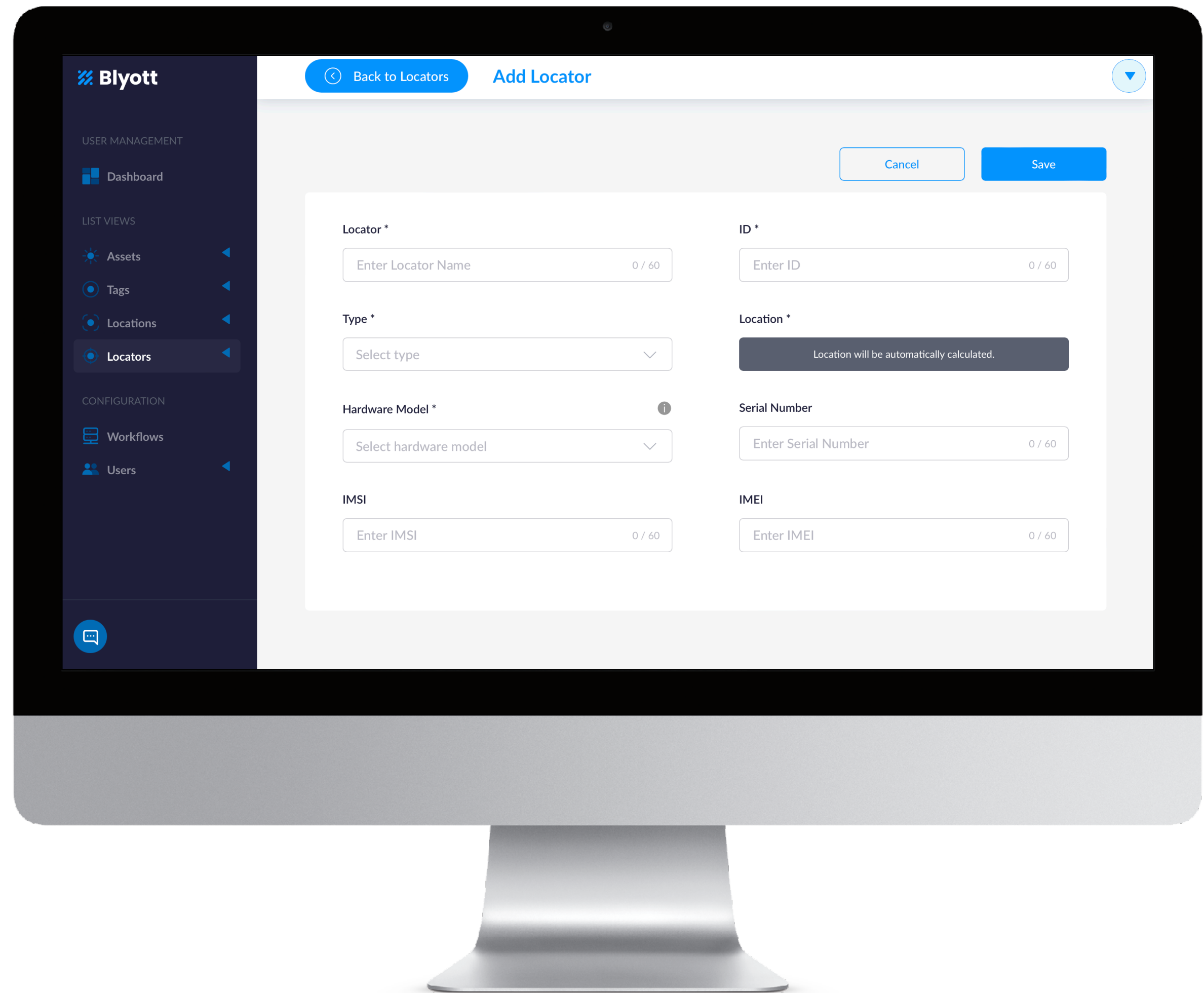
Step 1: Create Locations

- Go to tab “Locations”
- Click on the “+” sign to add a new location
 - ▶ Location = name of the room; e.g. Patient Room 1
 - ▶ Code = internal code of the room; e.g. R1
 - ▶ Status = choose “In Use” as standard value (e.g. “patient room = in use” whereby “storage room = available”)
- Click on Save
 - ▶ Repeat the process; for the demo enter at least as many locations as you have BT-M1’s.
 - ▶ **Remark:** the “Mobile Demo Kit” is already pre-configured.



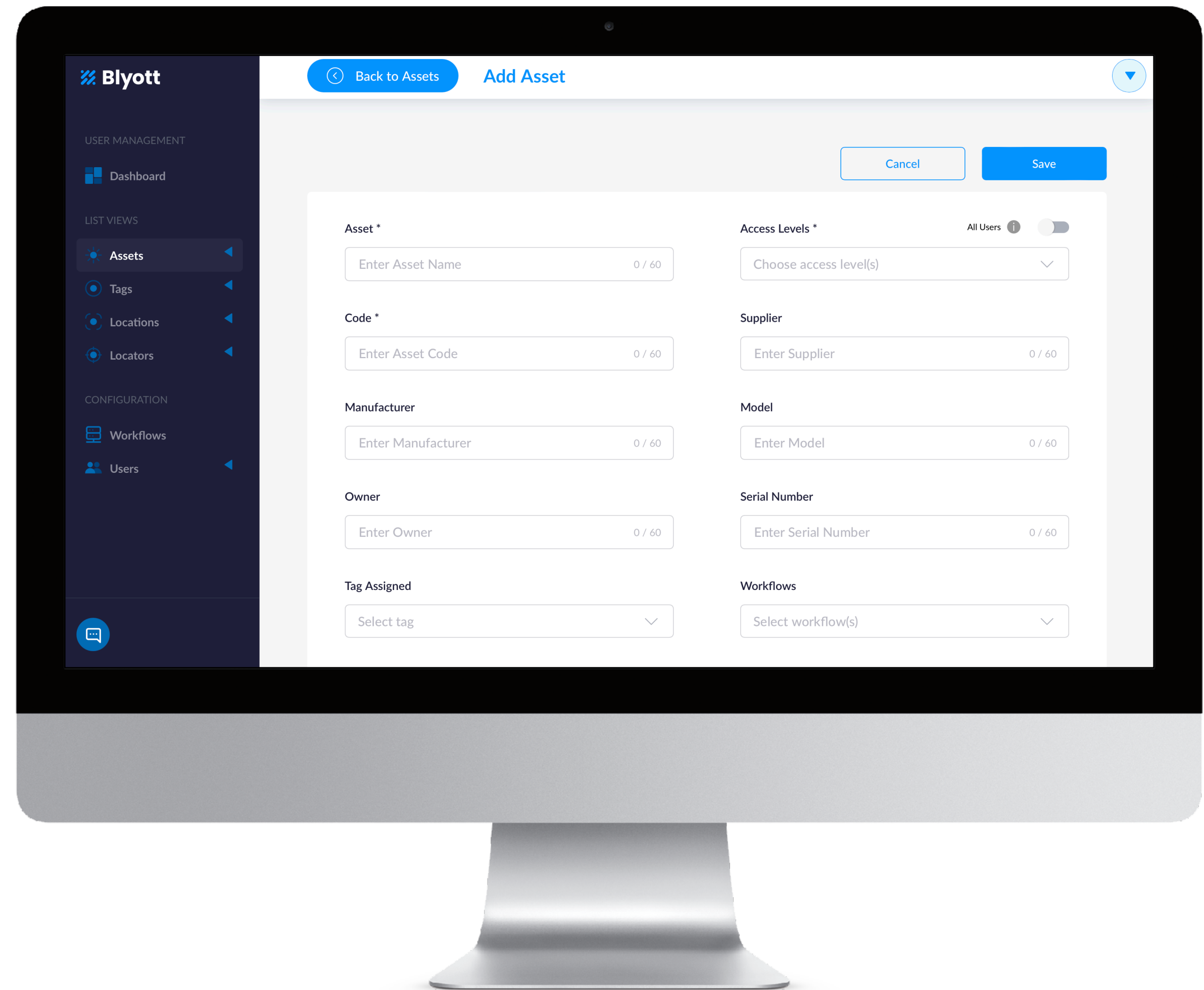
Step 2: Create Locators

- Go to tab “Locators”
- Click on the “+” sign to add a new locator
 - ▶ Locator = name you give to the locator; e.g. Locator 1
 - ▶ ID = IMEI number as indicated on the front of the BT-M1.
 - ▶ Type = choose “Fixed” as standard value
 - ▶ Location = select one of the Locations you defined
 - ▶ Hardware Model = select BT-M1
 - ▶ Serial Number, IMSI, IMEI = leave empty
- Click on Save
 - ▶ In case the Locator is installed in a moving vehicle, select for “Type = Mobile”. Now the location will be calculated using the built-in GPS modem of the BT-M1. See also FAQ.
 - ▶ **Remark:** the “Mobile Demo Kit” is already pre-configured.



Step 3: Create Assets

- Go to tab “Assets”
- Click on the “+” sign to add a new asset
 - ▶ Asset = name of the asset; e.g. Bed 001
 - ▶ Access Levels = select “all”
 - ▶ Code = enter e.g. the unique barcode of the bed
 - ▶ Tag Assigned = leave empty
- Click on Save
 - ▶ Repeat the process; for using the demo enter at least as many assets as you have BT-BS’s.
 - ▶ Assets can also be added via the “mobile app”; cf. “Step 5”.
 - ▶ **Remark:** the “Mobile Demo Kit” is already pre-configured.



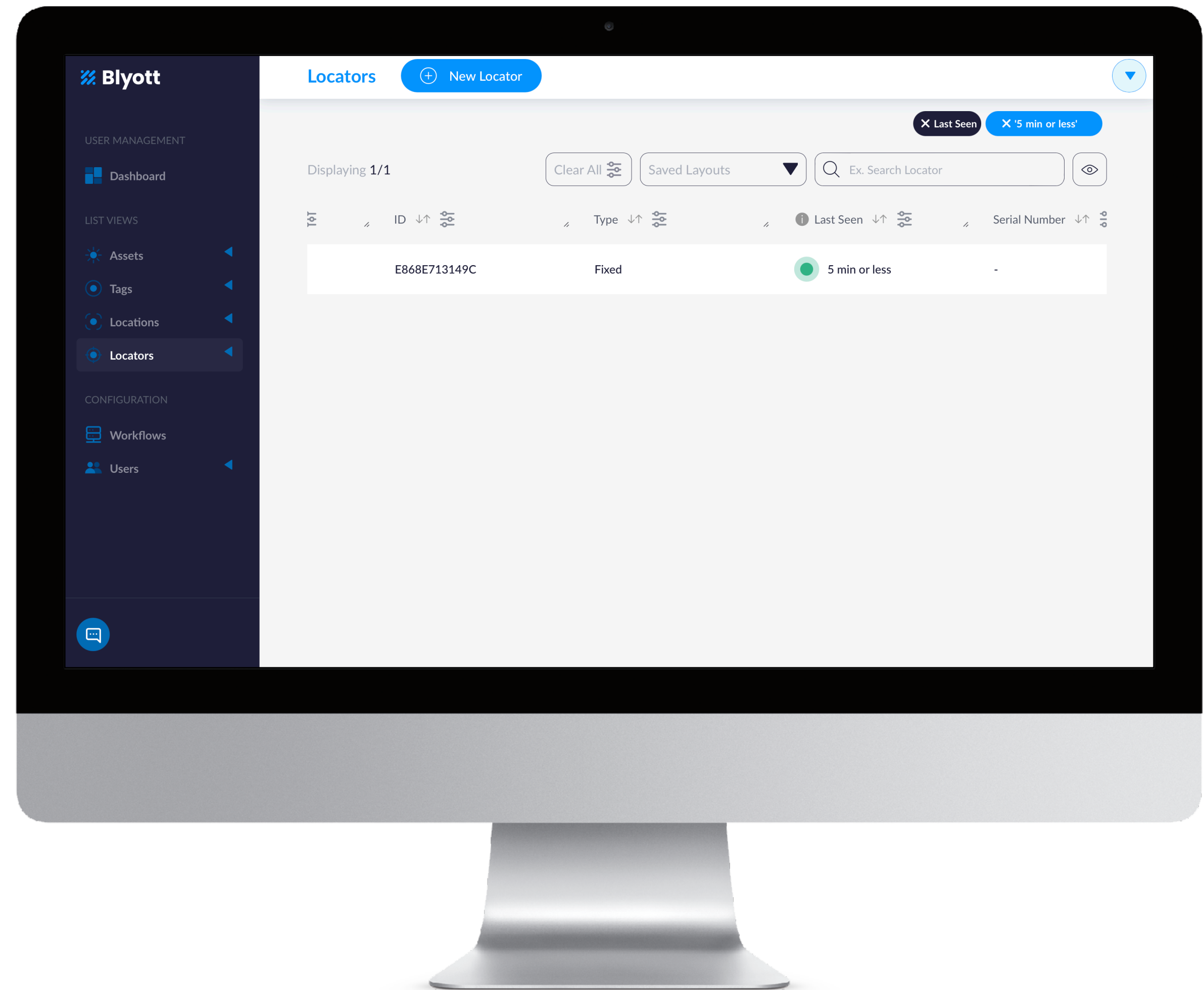
Step 4: Activate Locators & Tags

• Activate the BT-M1 locator

- ▶ The BT-M1 is pre-configured and works out-of-the-box using its built-in GSM & GPS modems and BLE scanner.
- ▶ Connect the BT-M1 to the included 110V/220V power adaptor. The built-in battery of the BT-M1 is for back-up purposes only and will last <48 hours.
- ▶ You can check the connection status per device via the Blyott portal. On the device: one blinking light means *“powered on, connected to the Blyott portal and sending data”*.
- ▶ Dependent on your BT-M1 configuration, updates to the Blyott Cloud platform are sent every 3-5min.

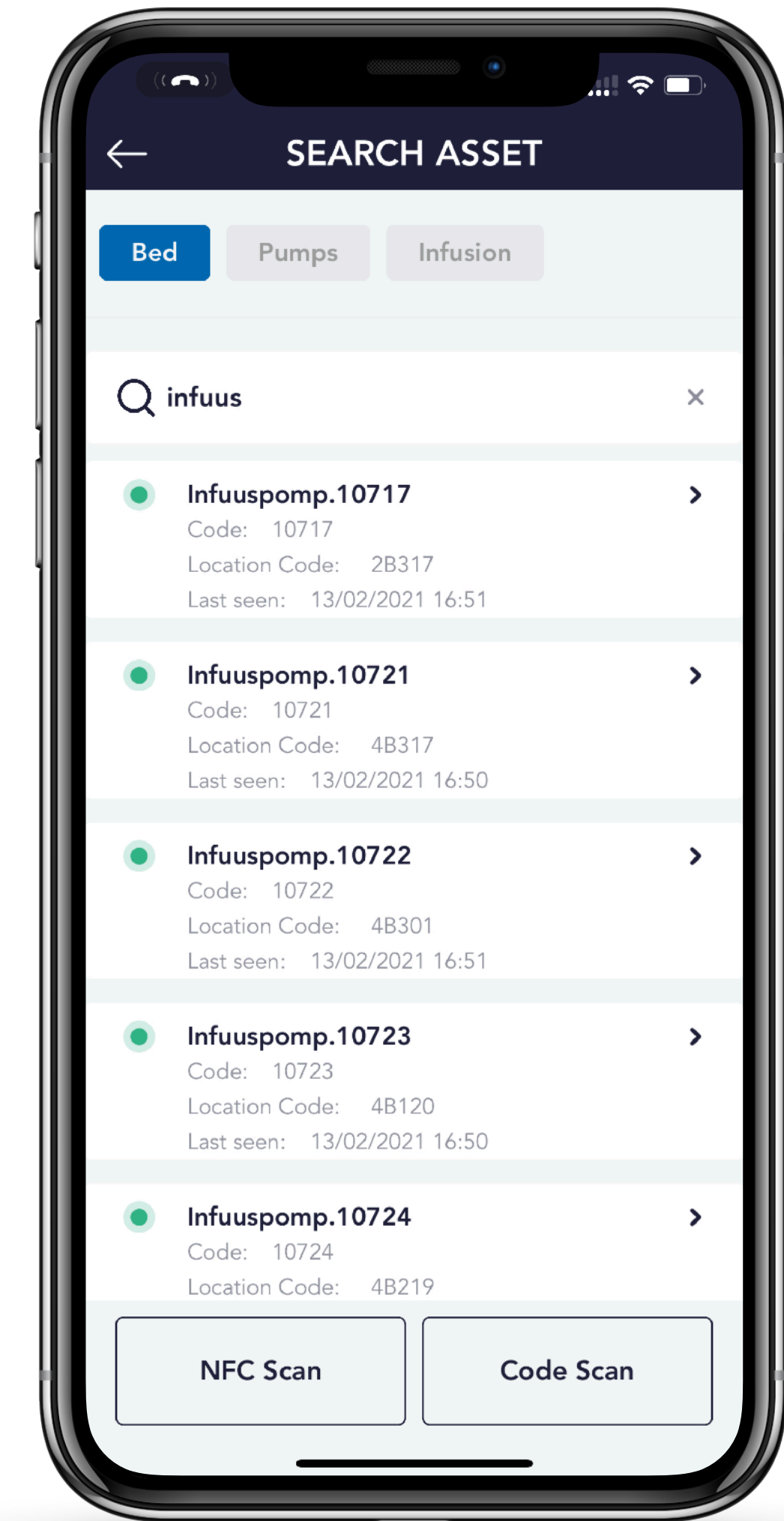
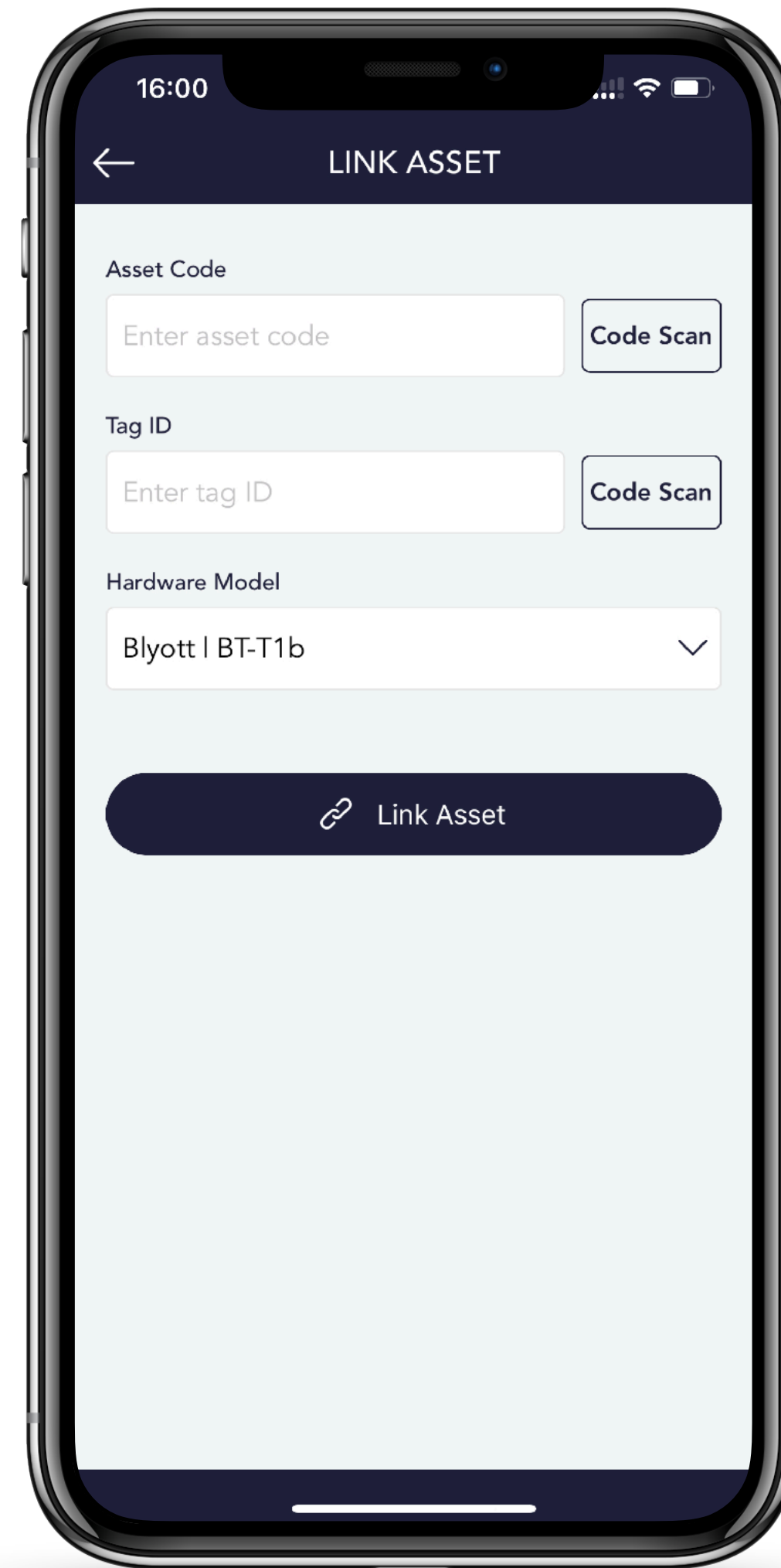
• Activate the BT-BS tags

- ▶ Cut the top-left protruding tab.



Step 5: Mobile App

- Download our Mobile App
 - ▶ Available in both the Apple App Store and the Google Play Store under the “Blyott” brand-name
 - ▶ To log-in: use your existing Blyott credentials.
- Link Asset to Tag
 - ▶ Take one of the BT-BS tags and fix the tag on an asset, e.g. Bed 001.
 - ▶ Click “Link Asset” in the mobile app. Scan the QR-code of the tag (= Tag ID). Scan the Barcode of the asset (or enter e.g. bed001 manually) (= Asset Code). Click the “Link Asset” button.
 - ▶ The tag is now linked to the asset. You can now search for your assets by clicking the “Search Asset” button.



Frequently Asked Questions (1/2)

• Bulk Down- and Upload?

- ▶ Yes. Via the Blyott portal you can down- and upload many items at the same time (e.g. assets, locations, locators, ...). We also have Excel templates to facilitate the onboarding process.

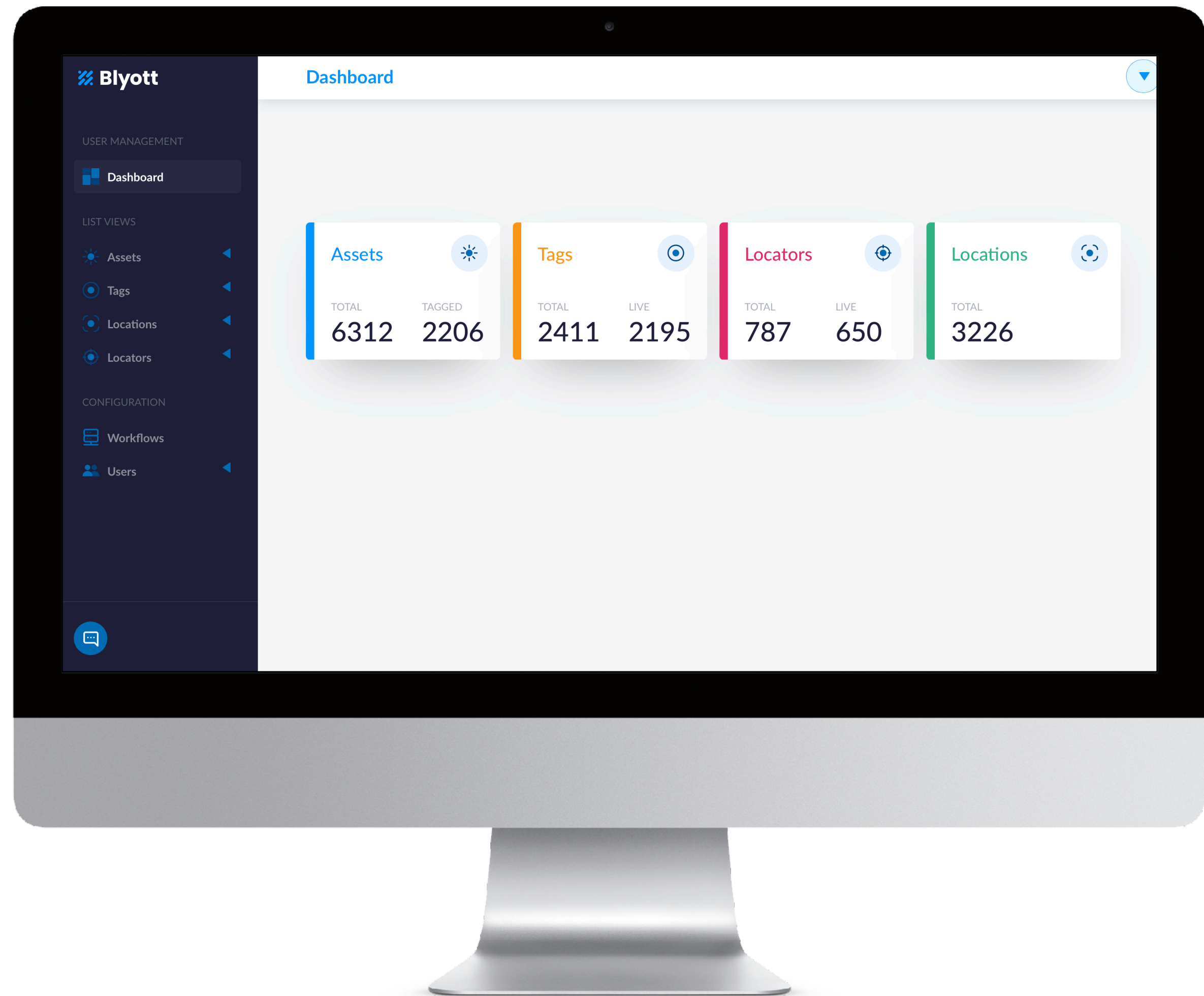
• 3rd Party App Integration and Alerts?

- ▶ Yes. Via our REST API's and WebHooks is it possible to integrate many features in existing applications. Check out our API's [here](#) or support site [here](#).
- ▶ Via the "webhooks" menu option in the Blyott portal you can create your own alerts (e.g. when tag leaves a zone, when T° is too high, ...).

• Sensors & 3rd Party Tags?

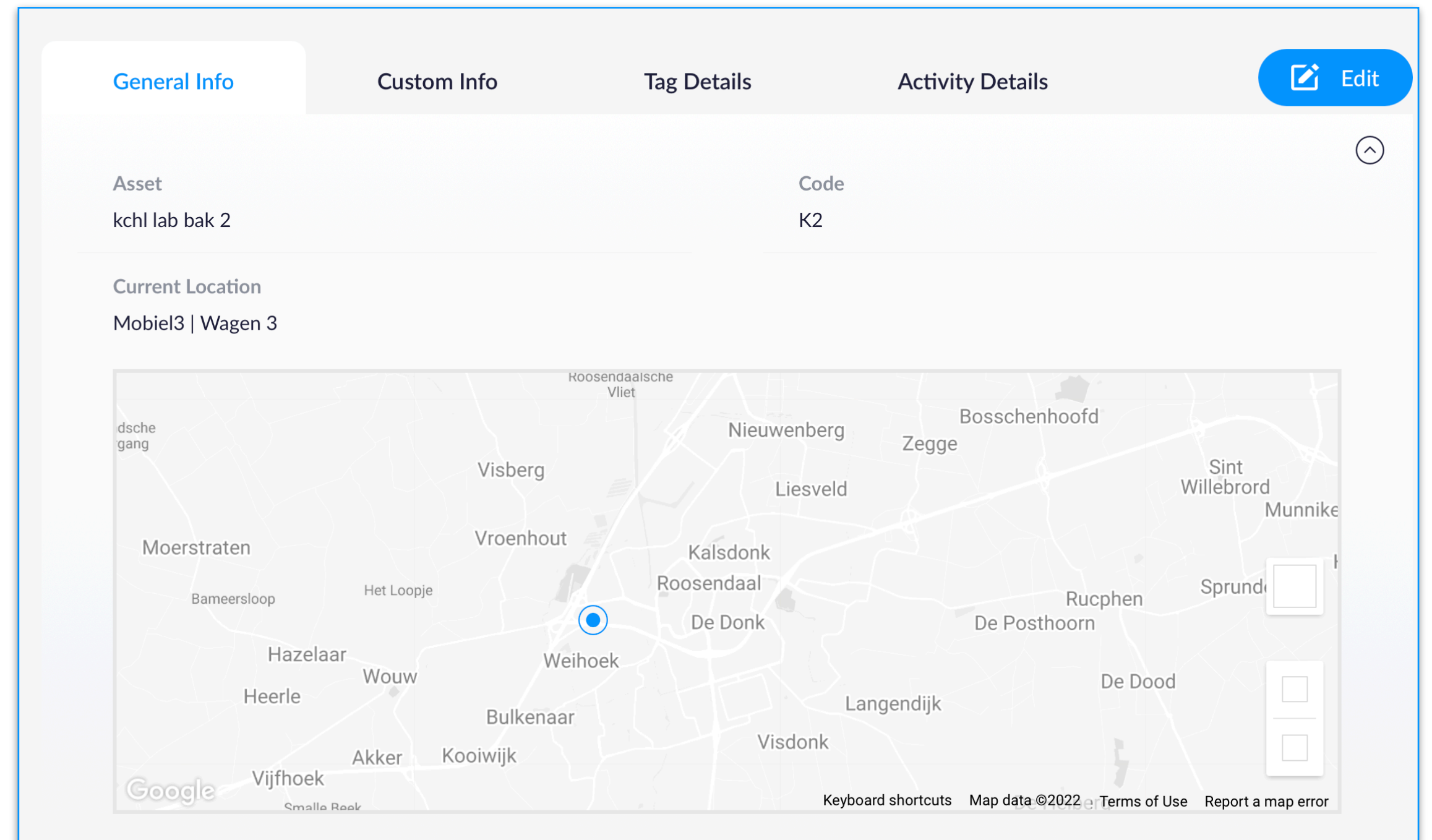
- ▶ We have a wide variety of tags and sensors. Consult our marketing portal [here](#).
- ▶ It is possible to integrate 3rd party tags with our cloud platform.

Contact us for more information @ support@blyott.com



Frequently Asked Questions (2/2)

- “Fixed Use Case”?
 - ▶ In this use case, the BT-M1 is installed in and linked to a “fixed” location, e.g. a storage room in a hospital. If the BT-M1 sees a tag in this room, on the Blyott platform the location of this tag will be the location where the BT-M1 has been installed.
- “Mobile Use Case”?
 - ▶ In this use case, the BT-M1 is installed in a “mobile” location, e.g. an ambulance. If the locator sees a tag in this vehicle, on the Blyott platform the location of the this tag will be the actual location of this vehicle based upon the GPS coordinates received by the locator. If no GPS coordinates are available, e.g. when parked underground, the location will be “unknown”.
- “Mobile Data”?
 - ▶ The BT-M1 includes a SIM card which works in all EU28 countries + US and Canada. The Blyott demo kit license includes mobile data usage.



Example of the Blyott portal displaying the actual location of an asset based upon the GPS coordinates of the BT-M1. Via the Blyott REST API's you can retrieve the different locations (GPS coordinates) where an asset has been over a certain period of time.

Big Savings Happy Staff

THANK YOU FOR YOUR ATTENTION
www.blyott.com - info@blyott.com